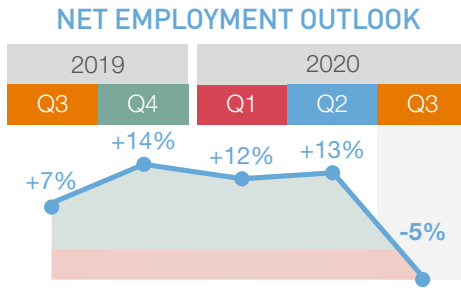


### HIRING INTENTIONS IN BELGIUM AT 17 YEAR LOW FOR Q3 2020

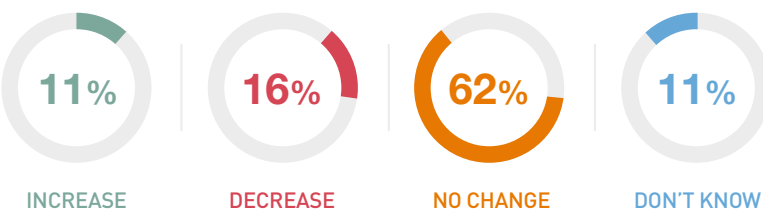


# -5%

Net Employment Outlook Belgium Q3 2020

Q3 2020

**461 BELGIAN EMPLOYERS WERE ASKED:** "How do you anticipate total employment at your location to change in the three months **to the end of September 2020**, as compared to the current quarter?"

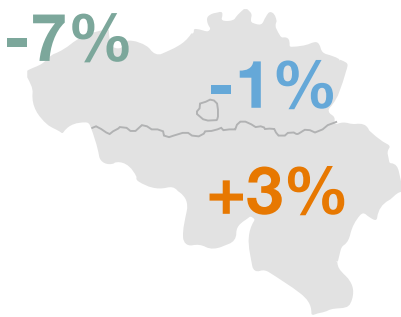


Q3 2020

### DECLINING FORECASTS IN ALL INDUSTRY SECTORS SURVEYED

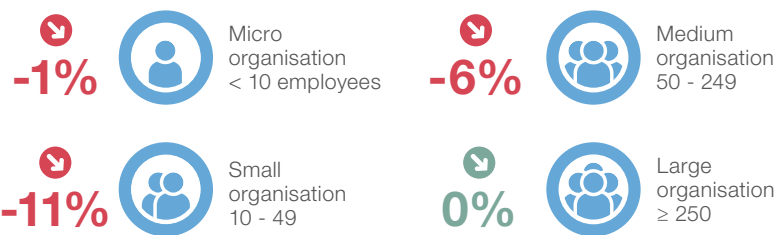


### WEAKEST HIRING PLANS EVER IN FLANDERS AND BRUSSELS



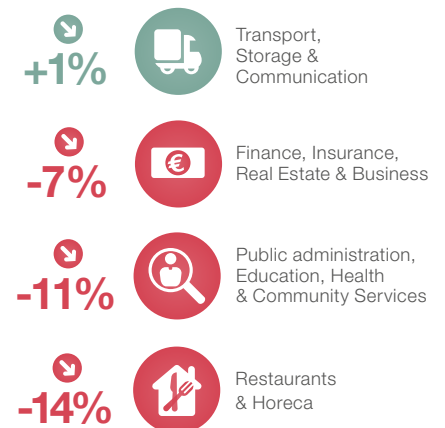
Q3 2020

### GREATER IMPACT ON EMPLOYMENT IN SMALL BUSINESSES

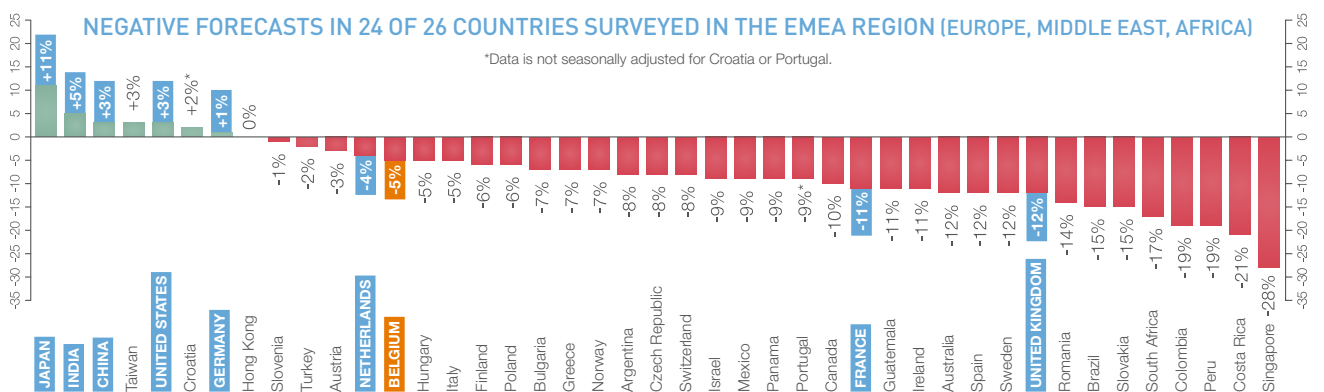


Q3 2020

### SERVICES



Q3 2020



Q3 2020

43 countries / 34.600+ employees

### WHAT DO THESE FIGURES MEAN?

% employers anticipating total employment to increase  
 - % employers anticipating total employment to decrease  
 = Net Employment Outlook (in %, can be positive or negative)

Q3 2020

The ManpowerGroup Employment Outlook Survey is the most extensive, forward-looking employment survey in the world.

Q3 2020