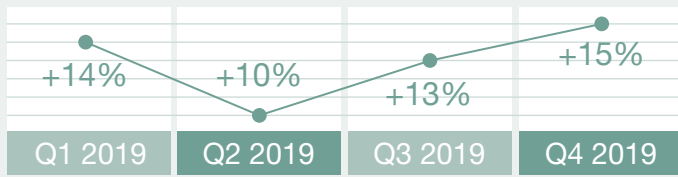


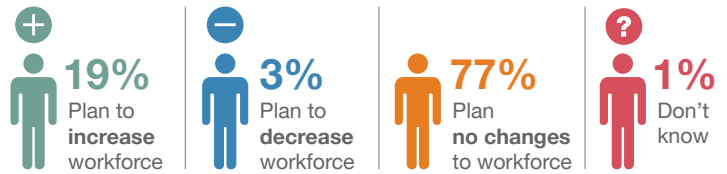
NEW ZEALAND Q4 2019

+15% New Zealand's Q4 2019 Net Employment Outlook



650 New Zealand employers were asked:

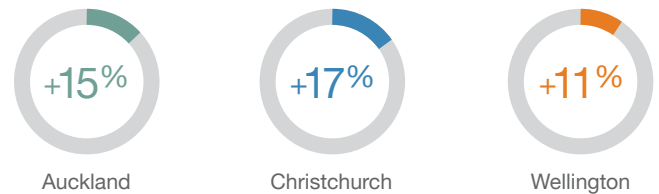
How do you anticipate total employment at your location to change in the next three months compared to the current quarter?



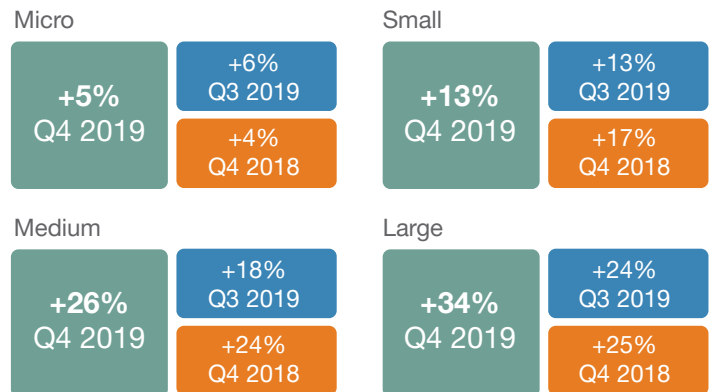
Global Net Employment Outlooks



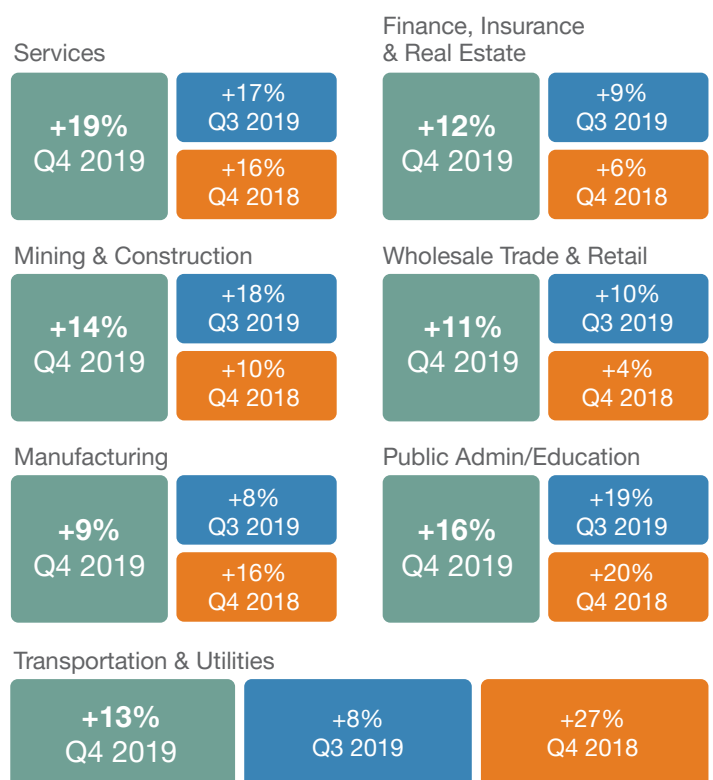
Q4 2019 Hiring intentions



Hiring intentions via organisation size:



Hiring intentions via sector:



*Survey results for both Croatia and Portugal are not seasonally adjusted.